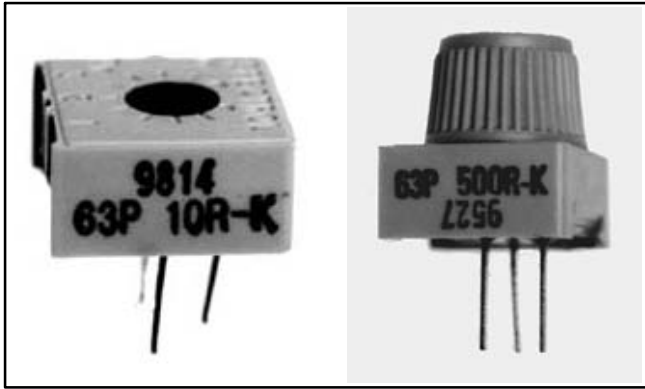


Features

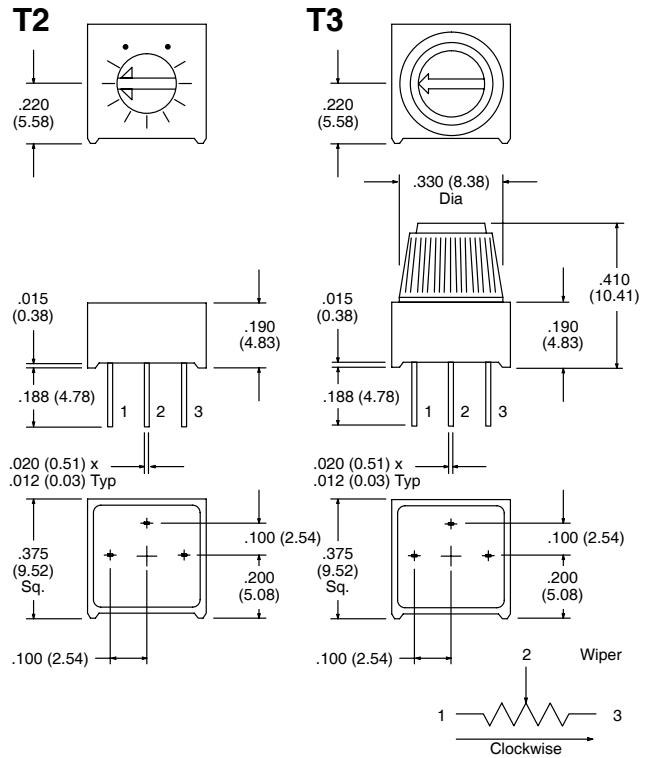
- Multifinger wiper for better contact resistance
- Arrow and graduations for repeatable settings
- "O" ring seal for solvent and aqueous washing
- IC style pins for easier board insertion
- Solid end stop



Spectrol No.	NTE Part No.	Value (Ohms)	Adjust	Diag No.
63P-100	500-0070	10	Top	T2
63P-200	500-0071	20	Top	T2
63P-500	500-0072	50	Top	T2
63P-101	500-0073	100	Top	T2
63P-201	500-0074	200	Top	T2
63P-501	500-0075	500	Top	T2
63P-102	500-0076	1K	Top	T2
63P-202	500-0077	2K	Top	T2
63P-502	500-0078	5K	Top	T2
63P-103	500-0079	10K	Top	T2
63P-203	500-0080	20K	Top	T2
63P-253	500-0081	25K	Top	T2
63P-503	500-0082	50K	Top	T2
63P-104	500-0083	100K	Top	T2
63P-204	500-0084	200K	Top	T2
63P-254	500-0085	250K	Top	T2
63P-504	500-0086	500K	Top	T2
63P-105	500-0087	1M	Top	T2
63P-205	500-0088	2M	Top	T2
63P-T607-101	500-0098	100	Dial Knob	T3
63P-T607-201	500-0099	200	Dial Knob	T3
63P-T607-501	500-0100	500	Dial Knob	T3
63P-T607-102	500-0101	1K	Dial Knob	T3
63P-T607-202	500-0102	2K	Dial Knob	T3
63P-T607-502	500-0103	5K	Dial Knob	T3
63P-T607-103	500-0104	10K	Dial Knob	T3
63P-T607-203	500-0105	20K	Dial Knob	T3
63P-T607-253	500-0106	25K	Dial Knob	T3
63P-T607-503	500-0107	50K	Dial Knob	T3
63P-T607-104	500-0108	100K	Dial Knob	T3
63P-T607-204	500-0109	200K	Dial Knob	T3
63P-T607-254	500-0110	250K	Dial Knob	T3
63P-T607-504	500-0111	500K	Dial Knob	T3
63P-T607-105	500-0112	1M	Dial Knob	T3

Spectrol 63P Series

Trimmer – 3/8" square, single turn cermet



Specifications

Electrical

Effective Travel: 270° nom

Resistance Range: 10Ω to 2 Meg Ω

Resistance Tolerance: ±10%

End Resistance: 2Ω max

Temperature Coefficient of Resistance:

100 ppm/°C. 100Ω thru 2 Meg Ω

0 to +250 ppm/°C. below 100Ω

Power Rating: 1/2 Watt @ 70°C derated to 0 Watts @ 125°C

Dielectric Withstanding Voltage:

1000V AC at sea level

250V AC at 80,000 feet (24,400 meters)

Insulation Resistance: 1000 Meg Ω min

Contact Resistance Variation: 2% or 20Ω, whichever is greater

Mechanical

Stop: Solid

Starting Torque: 35mNm max

Resistance Element: Cermet

2-Terminal Adjustability: 0.15% of RT

3-Terminal Adjustability: 0.05% of applied voltage

Environmental

Operating Temperature: -55°C to +125°C

Electrical Endurance: 1000 hour

Mechanical Life: 200 cycles